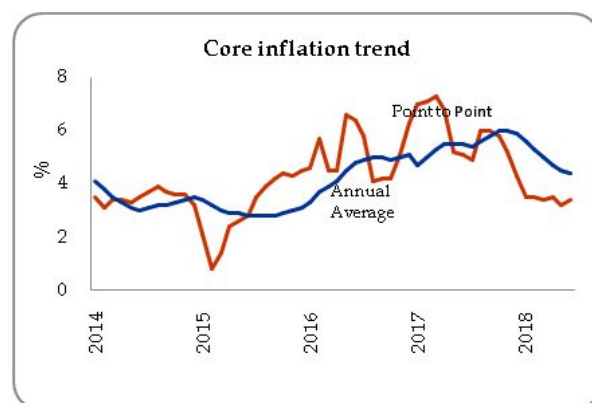
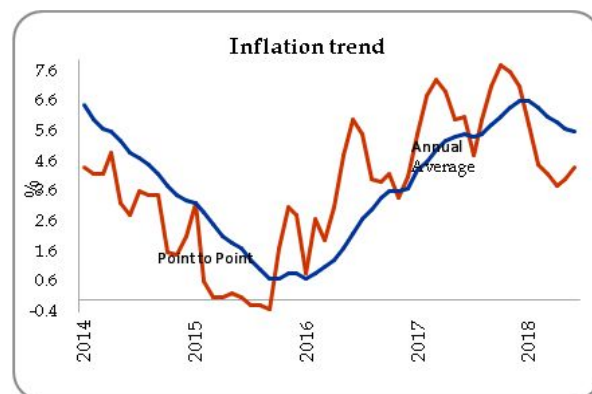


INFLATION, INTEREST RATES & EXCHANGE RATES

Month	CCPI (%)		Core Inflation (%)		NCPI (%)	
	(2013=100)		(2013=100)		(2013=100)	
	Point to Point	Annual Average	Point to Point	Annual Average	Monthly Change	Point to Point
Aug	4.4	3.7	3.8	4.9	-1.6	4.5
Sep	4.2	3.9	3.7	4.8	0.2	4.7
Oct	4.1	4.0	3.8	4.6	4.0	5.0
Nov	4.0	4.0	4.8	4.5	4.0	4.1
Dec	4.5	4.0	5.8	4.4	4.0	4.2
Jan-17	5.5	4.3	7.0	4.7	1.1	6.5
Feb	6.8	4.6	7.1	5.0	0.5	8.2
Mar	7.3	5.0	7.3	5.3	-0.3	8.6
Apr	6.9	5.3	6.8	5.5	1.3	8.4
May	6.0	5.4	5.2	5.5	0.7	7.1
June	6.1	5.5	5.1	5.5	1.3	6.3
July	4.8	5.4	4.9	5.4	-0.8	6.3
Aug	6.0	5.5	6.0	5.6	-0.1	7.9
Sep	7.1	5.8	6.0	5.8	0.8	8.6
Oct	7.8	6.1	5.8	6.0	1.2	8.8
Nov	7.6	6.4	5.2	6.0	1.3	8.4
Dec	7.1	6.6	4.3	5.9	0.2	7.3
Jan-18	5.8	6.6	3.5	5.6	-0.6	5.4
Feb	4.5	6.4	3.5	5.3	-1.7	3.2
Mar	4.2	6.1	3.4	5.0	-0.7	2.8
Apr	3.8	5.9	3.5	4.7	0.1	1.6
May	4.0	5.7	3.2	4.5	1.1	2.1
June	4.4	5.6	3.4	4.4	1.8	2.5



Source: Department of Census and Statistics

The point to point inflation of CCPI increased to 4.4 per cent in June 2018. The annual average of CCPI decreased to 5.6 per cent in June 2018. The National Consumer Price Index (NCPI) covering provinces of the country increased to 2.5 percent in June 2018, on year on year basis.

Contribution of Food Items to CCPI from May 2018 to June 2018

Commodity	Value Change Rs.	Change %
Food	979.79	1.32
Rice	-3.74	-0.01
Chicken	17.15	0.02
Sea Fish	262.98	0.35
Milk Powder	71.42	0.10
Potatoes	26.66	0.04
Vegetables	599.21	0.81
Red Onions	-11.52	-0.02
Big onions	16.57	0.02
Dried Fish	6.25	0.01
Banana	-64.43	-0.09
Eggs	27.04	0.04
Limes	12.87	0.02
Papaw	-20.13	-0.03

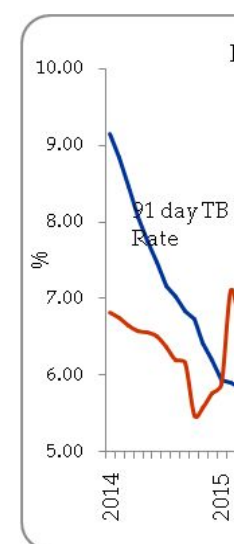
Source: Department of Census and Statistics

Movements of the CCPI in Food Items (2013=100)

Month	% Change Month to Month	Inflation	
		Point to Point	Annual Average
Dec	0.8	4.1	6.1
Jan-17	1.6	4.5	6.4
Feb	1.2	7.7	6.9
Mar	-0.7	9.2	7.4
Apr	1.7	8.6	7.5
May	2.3	9.3	7.6
Jun	4.8	9.1	7.6
Jul	-1.7	4.8	7.0
Aug	-2.5	6.9	6.9
Sep	1.6	10.4	7.1
Oct	2.6	12.6	7.6
Nov	1.7	13.8	8.4
Dec	1.3	14.4	9.3
Jan-18	-1.9	10.5	9.8
Feb	-2.9	6.0	9.6
Mar	-1.5	5.1	9.2
Apr	-0.4	3.0	8.8
May	2.6	3.3	8.3
June	4.4	2.9	7.7

Source: Department of Census and Statistics

Month	CCPI (2013 =100)	CCPI Point to Point Change	CCPI Annual Average Change	91 Days T Bill Rate	Real Interest Rate (Y on Y)	Real Interest Rate (Annual Avg)
Dec	114.7	4.5	4.0	8.72	4.22	4.72
Jan-17	116.1	5.5	4.3	9.03	3.53	4.73
Feb	116.7	6.8	4.6	9.32	2.52	4.73
Mar	116.5	7.3	5.0	9.63	2.33	4.63
Apr	117.1	6.9	5.3	9.73	2.83	4.43
May	118.2	6.0	5.4	9.62	3.62	4.22
June	120.1	6.1	5.5	9.60	3.50	4.10
July	119.4	4.8	5.4	9.44	4.64	4.04
Aug	118.8	6.0	5.5	8.87	2.87	3.37
Sep	119.7	7.1	5.8	8.71	1.61	2.91
Oct	120.8	7.8	6.1	8.76	0.96	2.66
Nov 1.80	122.2	7.6	6.4	8.20	8.20	0.60
Dec 1.09	122.9	7.1	6.6	7.69	7.69	0.59
Jan-18 1.09	122.8	5.8	6.6	7.69	7.69	1.89
Feb 1.84	121.9	4.5	6.4	8.24	8.24	3.74
Mar 2.07	121.4	4.2	6.1	8.17	8.17	3.97
Apr 2.20	121.5	3.8	5.9	8.10	8.10	4.30
May 2.64	122.9	4.0	5.7	8.34	8.34	4.34
June	125.4	4.4	5.6	8.37	3.97	2.77



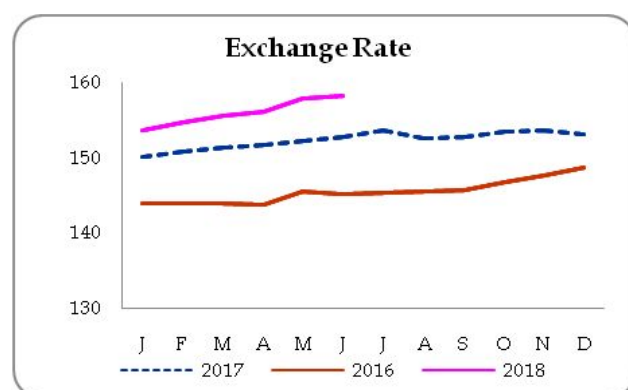
Sources : Central Bank of Sri Lanka and Department of Census and Statistics

Category	Week Ending 13 th July 2018	Week Ago	Month Ago	Year Ago
Standing Deposit Facility	7.25	7.25	7.25	7.25
Standing Lending Facility	8.50	8.50	8.50	8.75
Call Money Weekly Average	8.48	8.49	7.89	8.75
Treasury Bill (Yield rate)				
91 Days	8.37	8.35	8.34	9.60
182 Days	-	8.85	8.93	10.23
364 Days	9.43	9.43	9.62	10.39
Prime Lending Rate	11.34	11.33	11.42	11.40
	June-18		Month Ago	Year Ago
Commercial Bank Average Weighted Deposit Rate (AWDR)	8.92		8.91	9.13

Source : Central Bank of Sri Lanka

Currency	Week Ending 13 th July 2018	Week Ago	Year Ago	% Change 2017/18
US Dollar	159.15	158.70	153.54	3.6
Sterling Pound	209.83	209.74	198.11	5.9
Euro	185.67	185.47	175.57	5.8
Japanese Yen	1.41	1.44	1.36	3.7
Indian Rupee	2.33	2.31	2.38	-2.1

Source : Central Bank of Sri Lanka



Money

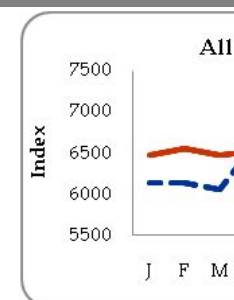
Item	May 2018	Apr 2018	Mar 2018	May 2017	Apr 2017	Mar 2017	Growth 2017 May/2018 May (%)
M ₁ (RsBn)	790.97	812.55	812.55	741.68	765.20	765.20	6.6
M ₂ (RsBn)	6,047.7	6,043.7	6,043.7	5,214.3	5,146.8	5,146.8	15.9
M _{2b} (RsBn)	6,670.9	6,691.7	6,691.7	5,803.1	5,730.7	5,730.7	14.9

Source: Central Bank of Sri Lanka

Item	May 2018	Month Ago	Year Ago
Credit to Private Sector (Rs.bn)	5,073.2	5,044.4	4,868.4
DBUs	4,721.9	4,684.4	4,584.4
OBU	351.31	360.05	284.0

Indicator	Week Ending 13 th July 2018	Week Ago	Year Ago
All Share Price Index (1985 = 100) (ASPI)	6,138.10	6,108.70	6,738.4
S & P Sri Lanka 20 Index (S & P SL20)	3,334.80	3,323.50	3,899.6
Average Daily Turnover (Rs.Mn)	394.20	570.0	594.5
Market Capitalization (Rs.Bn.)	2,868.00	2,853.60	3,056.2

Source: Colombo Stock Exchange



All Share Price Index (ASPI) decreased by 29.4 index points and closed at 6,138.10 points compared to the first week of July 2018. The S & P Sri Lanka 20 Index (S & P SL20) increased by 11.3 to 3,334.80 index points. The Average Daily Turnover decreased by Rs.175.8 million and stationed at Rs.394.2 million. Market Capitalization increased by Rs.868 billion in the second week of July 2018.

Equity Trading Statistics

Indicator	Jun 2018	Jun 2017	Jan-Jun 2018	Jan-Jun 2017
Turnover -Equity (Rs. Mn.)	11,586.7	21,312.1	109,394.6	110,531.2
Domestic (Rs. Mn.)	5,609.4	10,463.7	59,556.7	58,671.3
Foreign (Rs. Mn.)	5,977.2	10,848.4	49,837.9	51,859.9
Market Days	19	20	117	119
Daily Turnover Avg. Equity (Rs. Mn.)	609.8	1,065.6	934.9	928.8
Trade Equity	61,406	100,413	478,992	458,116
Domestic	57,574	94,977	453,665	431,798
Foreign	3,832	5,436	25,327	26,318
Shares Traded _Equity	338.4	835.2	3,373.2	4,402.8
Domestic (Rs. Mn.)	243.4	701.6	2,714.2	3,298.8
Foreign (Rs. Mn.)	95.0	133.7	658.9	1,104.0
Companies Traded	274	277	279	278
Companies Listed	298	296	298	296

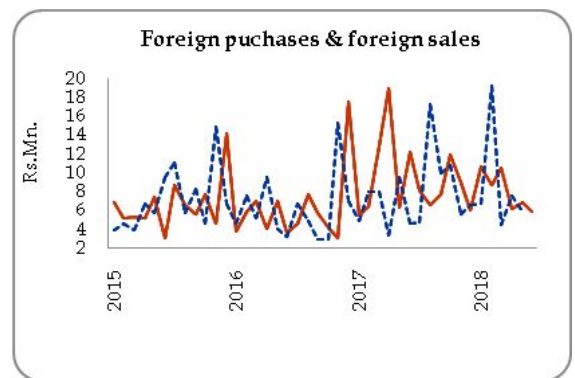
Price Indices	Jun 2018	May 2018	Oct 2017
ASPI	6,194.63	6,398.44	6,531.00
S&P SL 20	3,388.88	3,567.04	3,660.10
Total Return Indicators			
ASTRI	8,245.71	8,515.44	8,686.80
S&P SL20 (TRI)	5,010.88	5,262.69	5,385.40
Market PER	10.39	10.73	10.70
Dividend Yield	3.12	3.01	2.90
Market Capitalization (Rs.Bn.)	2,893.76	2,989.02	3,049.20

Source: Colombo Stock Exchange

Stock Market - Foreign Purchases and Foreign Sales

Indicator	Jun 2018	Jan-Jun 2018
Purchases by Foreigners (Rs. Mn)	5,982.5	49,030.8
Sales by Foreigners (Rs. Mn)	5,972.9	50,653.9
Net Foreign Purchases (Rs. Mn)	9.6	-1623

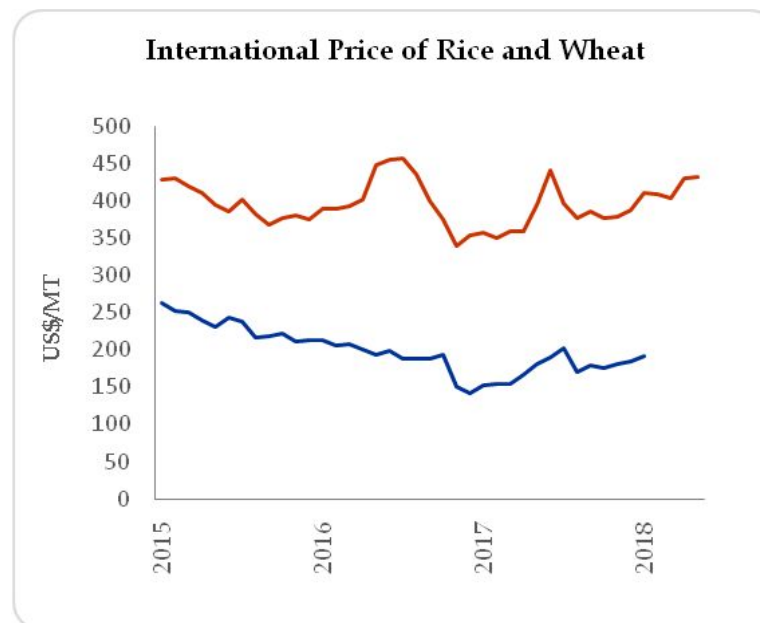
Source:Colombo Stock Exchange



COMMODITY PRICES

Inter

Month	Rice Thai,100%US\$/MT	Wheat (HRW) US\$/MT
Nov	339	151
Dec	354	142
Jan-2017	356	153
Feb	349	155
Mar	358	154
Apr	359	166
May	395	180
Jun	440	190
Jul	397	202
Aug	376	171
Sep	385	179
Oct	376	176
Nov	379	180
Dec	388	184
Jan-2018	411	192
Feb	408	-
Mar	403	-
Apr	430	214
May	432	-



Source: FAO Web Site, Available at fao.org/worldfoodsituation/foodpricesindex

Commodity	Unit	Annual Averages			Monthly Averages		
		Jan-Dec	Jan-Dec	Jan-Dec	Mar	Apr	May
		2015	2016	2017	2018	2018	2018
Non Energy, Agriculture, Beverages							
Cocoa	\$/kg	3.14	2.89	2.03	2.50	2.62	2.66
Coffee, Arabica	\$/kg	3.53	3.61	3.32	2.98	2.96	2.99
Tea, auctions (3) average	\$/kg	2.71	2.64	3.10	2.77	2.90	2.98
Tea, Colombo auctions	\$/kg	2.96	3.24	4.07	3.94	3.89	3.76
Food, Fats & Oils							
Coconut Oil	\$/mt	1,110	1,475	1,603	1,124	1,135	1,029
Copra	\$/mt	735	982	1,065	745	756	692
Palm Oil	\$/mt	623	700	715	681	664	660
Grains							
Barley	\$/mt	121.3	103.9	97.6	130.9	130.9	130.9
Maize	\$/mt	169.8	159.2	154.5	172.0	175.6	179.1
Wheat, US HRW	\$/mt	204.4	166.6	174.2	213.8
Other Food							
Meat, Beef	\$/kg	4.42	3.93	4.22	4.27	4.21	4.15
Meat, Chicken	\$/kg	1.99	1.85	2.12	2.17	2.35	2.62
Sugar, World	\$/kg	0.30	0.40	0.35	0.28	0.27	0.27
Raw Materials, Timber							
Plywood	¢/sheets	451.2	503.3	486.9	514.9	507.5	497.8
Wood pulp	\$/mt	875.0	875.0	875.0	875.0	875.0	875.0
Other Raw Materials							
Rubber RSS3, US	\$/kg	1.57	1.61	2.00	1.76	1.73	1.70
Fertilizers							
Phosphate Rock	\$/mt	130.8	125.8	97.2	95.0	103.0	103.0
TSP	\$/mt	377.7	291.1	283.3	324.0	325.0	326.0
Urea	\$/mt	273.1	197.9	221.4	235.9	224.0	217.7
Metals and Minerals							
Aluminum	\$/mt	1,665	1,604	1,968	2,069	2,255	2,300
Gold	\$/toz	1,161	1,249	1,258	1,325	1,335	1,303
Iron ore	\$/dmt	55.9	58.4	71.8	70.4	65.8	66.1

Source: The World Bank, Available at worldbank.org/WBSITE/EXTERNAL/EXTDEC/EXTDECPROPECTS

¢= US cent

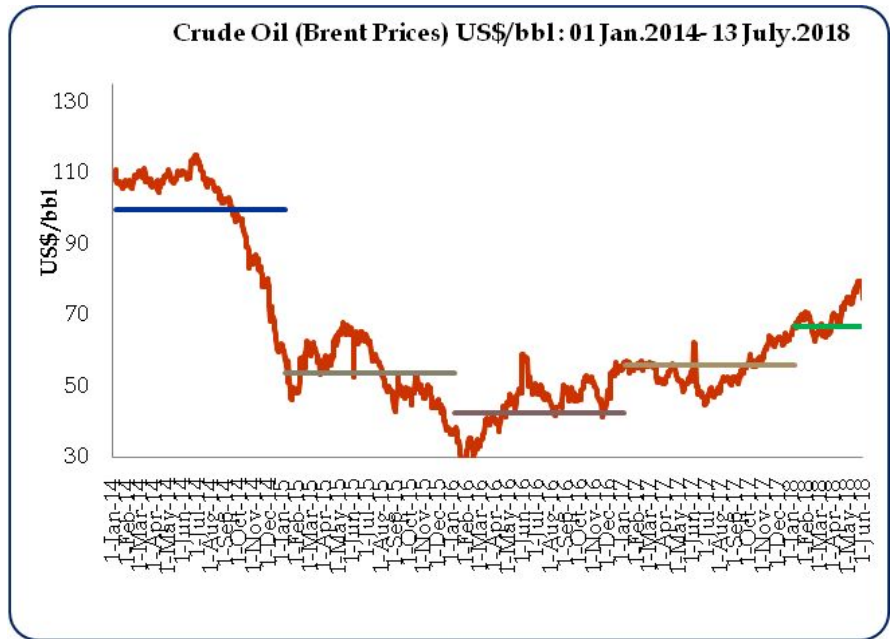
\$= US dollar

Crude Oil Prices - Singa

Item	July 09	July 10	July 11	July 12	July 13	Week Ago	Month Ago	Year Ago
Brent (New York Closing Prices)(US \$/bbl.)	77.36	78.28	77.81	74.46	74.09	77.09	75.72	47.64
WTI (US\$/bbl.)	73.95	74.02	73.42	70.58	70.21	72.78	66.01	45.35
Petrol	82.20	83.95	82.60	80.45	79.30	81.60	81.55	56.90
Diesel	85.80	86.98	85.71	83.15	82.07	85.54	85.20	57.41
Kerosene	89.40	90.68	89.40	86.72	85.34	88.99	87.04	57.35

Month	WTI European Market (US\$/bbl)	Brent (US\$/bbl)
Nov	45.85	45.96
Dec	54.74	52.04
Jan-17	52.83	55.67
Feb	53.41	55.99
Mar	49.92	52.76
Apr	51.27	53.98
May	51.59	48.77
Jun	47.71	45.34
July	49.02	46.93
Aug	51.87	48.18
Sep	49.76	55.44
Oct	54.04	60.83
Nov	56.68	62.80
Dec	63.92	57.82
Jan-18	63.55	69.02
Feb	62.26	65.80
Mar	66.69	62.80
Apr	66.21	71.55
May	76.88	69.92
June	66.93	75.70
July*	73.18	77.14

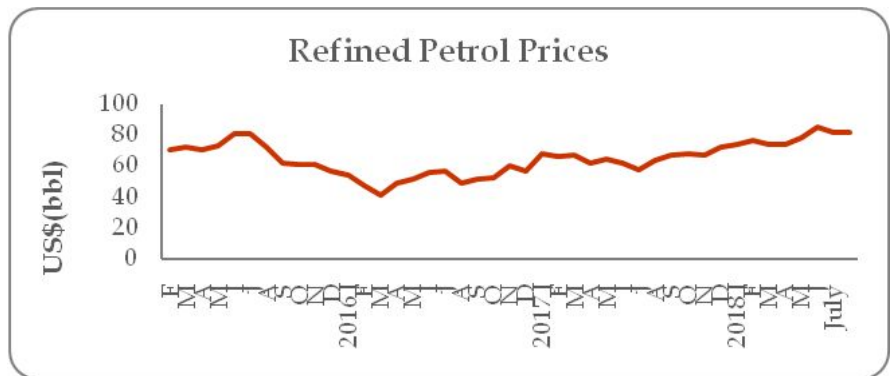
Source: Central Bank of Sri Lanka
*up to 13th July 2018



Month	Petrol	Diesel	Kerosene
Nov	56.63	56.03	56.62
Dec	67.80	66.34	64.87
Jan-17	66.75	64.70	65.13
Feb	67.55	66.31	66.25
Mar	61.93	62.43	61.85
Apr	64.83	63.92	63.92
May	61.60	60.45	60.84
Jun	57.38	56.81	57.12
July	59.10	59.76	59.87
Aug	64.73	62.02	6.11
Sep	67.66	66.53	67.97
Oct	70.15	69.68	71.33
Nov	73.05	71.80	74.06
Dec	73.45	74.49	75.61
Jan-18	76.65	80.05	80.91
Feb	74.17	76.52	79.98
Mar	74.24	76.74	79.03
Apr	78.36	82.58	85.14
May	85.37	88.26	90.16
June	81.50	84.80	86.95
July*	81.66	85.02	88.38

Source: Central Bank of Sri Lanka
*up to 13th July 2018

Monthly Average Refined Product Prices -Singapore



Item	Unit	End 2015	End 2016	End 2017	Current Price 2018
Auto Diesel	1 liter	95.00	95.00	95.00	118.00
Petrol (Octane 92)	1 liter	117.00	117.00	117.00	145.00
Kerosene oil	1 liter	49.00	49.00	44.00	70.00
L P Gas	12.5 kg	1,346.00	1,321.00	1,321.00	1,676.00

Week

Pettah Market

Average Wholesale Prices	Week Ending 13/07/2018	Week Ago	% Change	Year Ago Annual Avg.
Rice (Rs/Kg)				
Samba	106.00	106.00	-	94.82

Food Item	Wholesale (Average)
Rice (Rs/Kg)	
Samba	105.20
Kekulu (Red)	69.60
Vegetables	

Kekulu (Red)	63.00	63.00	-	80.30
Vegetable				
Beans	204.00	190.00	7.4	118.56
Cabbage	132.00	147.00	-10.2	75.37
Carrots	162.00	170.00	-4.7	120.95
Tomatoes	133.00	213.00	-37.6	93.73
Pumpkins	44.00	42.00	4.8	61.84
Snake Gourd	96.00	103.00	-6.8	96.74
Brinjals	66.00	63.00	4.8	94.90
Ash Plantains	77.00	70.00	10.0	73.41
Other Foods				
Red-Onions (Local)	117.00	140.00	-16.4	250.84
Big Onions (Local)	n.a.	n.a.	-	110.80
Potatoes (N'Eliya)	173.00	145.00	19.3	127.34
Dried Chilies (Imported)	255.00	255.00	-	189.80
Dhal (Indian)	104.00	104.00	-	135.31
Eggs (Red) (Each)	16.50	16.00	3.1	11.96
Coconut (Each)	52.00	57.00	-8.8	61.72

Fish (Rs/Kg)				
Kelawalla	620.00	n.a.	-	540.63
Balaya	300.00	320.00	-6.3	301.46
Salaya	200.00	180.00	11.1	116.88
Paraw (Small)	580.00	n.a.	-	538.02

Source: Central Bank of Sri Lanka

Pumpkins	39.30
Snake Gourd	68.50
Ash Plantains	63.50
Beans	209.00
Carrots	197.50
Tomatoes	111.00
Other Foods	
Potatoes (N'Eliya)	146.25
Dried Chilies (Imported)	255.50
Big-Onions (Local)	n.a.
Red-Onions (Local)	113.50
Coconut (Each)	40.20

Source: Central Bank of Sri Lanka

Marandagaha

Item	Week Ending 13/07/2018	Week Ago	Month Ago	Year Ago
Samba	101.00	101.60	101.05	92.96
Sudu Kekulu	74.10	74.90	77.92	83.16
Raw Red	68.50	74.10	74.76	80.21
Nadu	75.30	76.50	81.26	87.93

Source: Central Bank of Sri Lanka

Weekly Retail Commodity Prices -4th Week of June 2018

Rs.

Item	Unit	This Week	Week Ago	% Change	Year Ago
Rice					
Samba(Avg.)	1 kg	111.26	112.24	-0.9	99.56
No. 1	1 kg	114.67	116.14	-1.3	102.98
No. 2	1kg	107.86	108.35	-0.5	96.15
Nadu Red	1kg	97.18	98.35	-1.2	97.91
Raw Red (Avg)	1kg	80.47	83.57	-3.7	87.64
No. 1	1kg	86.31	89.09	-3.1	90.37

No. 2	1kg	74.63	78.04	-4.4	84.92
Wheat Flour	1 kg	90.31	90.15	0.2	89.24
Bread	450g	58.75	58.75	0.0	58.18
Sugar	1 kg	105.82	104.89	0.9	106.87
Lakspray	400g	345.00	345.00	0.0	325.00
Potatoes (Import)	1 kg	130.62	116.54	12.1	124.16
Potatoes (Local)	1kg	180.42	183.18	-1.5	180.13
Red Dhal(Avg)	1kg	149.95	150.33	-0.3	182.16
Cowpea (Avg)	1kg	283.68	289.68	-2.1	324.41
Green Gram(Avg)	1kg	255.75	256.94	-0.5	258.62
Kadalai (Avg)	1kg	280.23	284.17	-1.4	316.10
Meat					
Beef	1kg	975.33	959.52	1.6	922.89
Chicken					
Fresh	1kg	588.50	602.67	-2.4	569.64
Broiler	1kg	420.00	420.00	0.0	420.00
Fresh Fish					
Paraw	1 kg	1,112.22	1,123.53	-1.0	1,123.00
Balaya	1 kg	652.00	675.00	-3.4	780.96
Kelawalla	1 kg	1,034.38	1,023.91	1.0	1,119.04
Salaya	1 kg	257.65	248.33	3.8	226.88
Dried Fish					
Spratts	1 kg	718.33	741.38	-3.1	752.97
Eggs	Each	17.09	16.21	5.5	13.64
Coconut	Each	74.52	78.37	-4.9	64.76
Coconut Oil	750ml	285.81	289.29	-1.2	292.96
Red Onions	1 kg	176.75	177.75	-0.6	357.05
B- Onions (Import)	1 kg	115.14	105.77	8.9	96.50
Brinjal	1kg	199.38	240.11	-17.0	194.58
Beans Green	1 kg	311.25	296.22	5.1	227.95
Cabbage	1 kg	265.81	187.40	41.8	213.52
Drumstick	1 kg	650.00	440.87	47.4	244.41
Beet Root	1kg	247.41	211.28	17.1	199.15
Carrot	1kg	348.24	320.00	8.8	296.15
Tomatoes	1kg	302.31	240.46	25.7	166.35
Cap Chillies	1kg	517.93	419.67	23.4	319.57
Raddish	1kg	204.62	184.00	11.2	174.50
Beans Butter	1kg	400.00	480.00	-16.7	333.33
Bitter Guard	1kg	294.00	280.00	5.0	255.62
Anamalu	1kg	158.95	166.19	-4.4	164.59
Pineapple	1kg	141.25	123.00	14.8	158.89
Papaw	1kg	87.08	84.45	3.1	83.31

Source: Department of Census and Statistics

FISCAL SECTOR AND GOVERNMENT DEBT

Summary of Government Revenue



Tax Revenue

Income Tax

AT

Excise Duty

Station Building Tax

AL

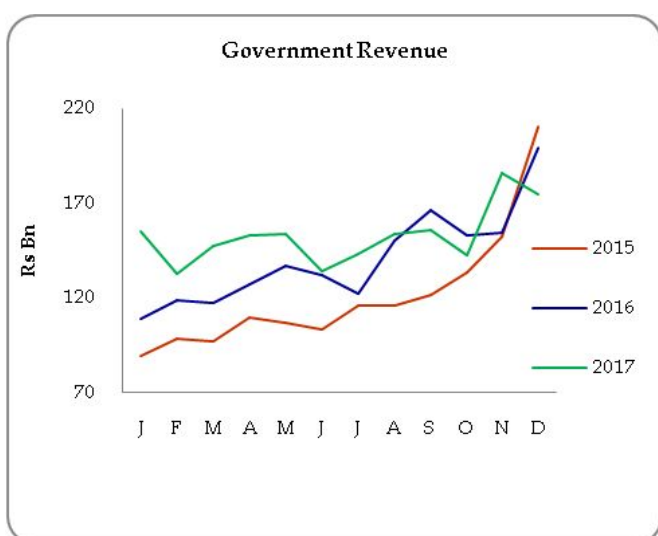
Customs Duty

CL

ess

Non Tax Revenue

Total Revenue



Source: Department of Fiscal Policy

(a) provisional

Government Debt

Government Debt (Rs.bn)	End 2017	2018 Q1(a)
Total Domestic Debt	5,594.4	5,770.9
Total Foreign Debt	4,718.6	4,883.2
Total Government Debt	10,313.0	10,654.1

Source: Central Bank of Sri Lanka

(a) provisional

Key Fiscal Indicators 2015-2016-2017

Indicator	Unit	2016	2017(a)	2018(a) (Jan-Apr)
Budget Deficit	RsMn	-640,326	-733,494	-250,638
	% of GDP	-5.4	-5.5	
Total Revenue	RsMn	1,686,061	1,831,531	622,379
	% of GDP	14.2	13.8	
Tax Revenue	RsMn	1,463,689	1,670,178	570,471
	% of GDP	12.3	12.6	
Non Tax Revenue	RsMn	222,372	161,353	51,908
	% of GDP	1.9	1.2	

Recurrent Expenditure	RsMn	1,757,782	1,927,692	685,966
	% of GDP	14.8	14.5	
Public Investment	RsMn	594,012	657,386	181,998
	% of GDP	5.0	4.9	
Government Debt	RsMn	9,387,303	10,313,046	243,403
	% of GDP	78.8	77.6	

Compiled by Department of Fiscal Policy

EXTERNAL SECTOR

External Trade

Category

Exports

Agricultural

ea

ther

Industrial

ubber Products

extiles and Garments

ood, Beverage and Tobacco

ther

Mineral

Unclassified

Imports

Consumer Goods

ood and Beverages

ther Consumer Goods

Intermediate Goods

etroleum

extiles & Textile Articles

ther Intermediate Goods

Investment Goods

Machinery and Equipment

ransport Equipment

uilding Material

ther Investment Goods

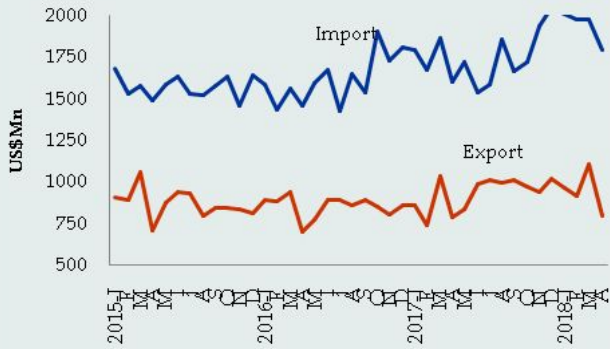
nclassified

Trade Balance

Source: Central Bank of Sri Lanka

- *Export earnings during January to May 2018 increased by 6.7 percent mainly due to the expansion of earnings from industry and mineral exports. The Industrial export earnings for the month of May 2018 increased by 15.5 percent, compared to the respective period of 2017.*
- *On a cumulative basis, expenditure on imports increased by 11.8 percent for the period during January to May 2018. Expenditure on imports for the month of May 2018 increased by 7.7 percent reflecting the performance of imports of intermediate goods and consumer goods.*
- *Trade deficit contracted to US\$ 933.2 Mn in May 2018 over the same period of 2017.*

External trade movements (2018 April)

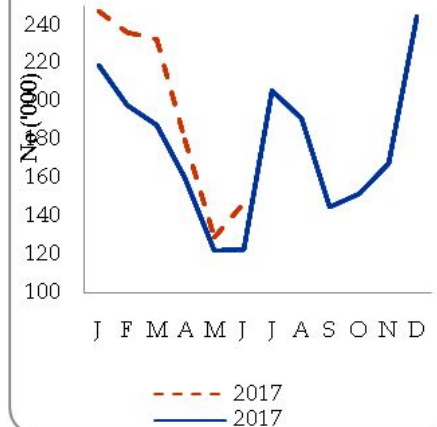


Tourist Arrivals

Month	Arrivals				Earnings US\$ Mn			
	2016	2017	2018	% change 2017/18	2016	2017	2018	% change 2017/18
Jan	194,280	219,360	246,972	12.6	333.3	376.3	423.7	12.6
Feb	197,697	197,517	235,618	19.3	339.0	366.3	436.9	19.3
Mar	192,841	188,076	233,382	24.1	330.8	348.8	432.8	24.1
Apr	136,367	160,249	180,429	12.6	226.0	297.2	334.6	12.6
May	125,044	121,891	129,466	6.2	214.5	226.1	240.1	6.2
Jun	118,038	123,351	146,828	19.0	195.6	228.8	272.3	19.0
July	209,351	205,482			359.2	352.5		
Aug	186,288	190,928			319.6	327.6		
Sep	148,499	145,077			254.8	248.9		
Oct	150,419	152,429			249.3	261.5		
Nov	167,217	167,511			277.1	287.4		
Dec	224,791	244,536			385.7	419.5		
Total	2,050,832	1,871,871	888,353	16.1	3,518.5	3,631.0	1,647.5	16.1

Source: Sri Lanka Tourism Development Authority

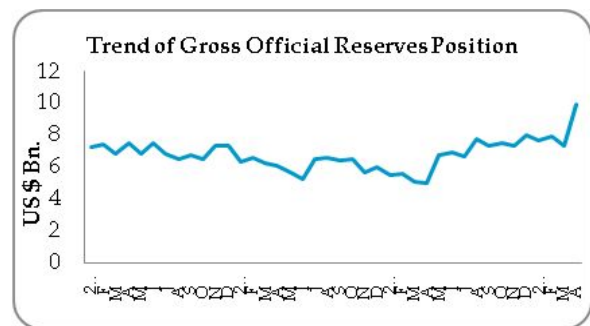
Tourist Arrivals



External Assets

External Assets (US\$ Mn)	Apr 2018	Mar 2018	Feb 2018
Total Reserves	12,312.31	9,575.97	10,062.35
Gross Official Reserves	9,935.77	7,319.75	7,922.37

Source: Central Bank of Sri Lanka



Private Remittances

Category		2017 May (b)	2018 May (a)	2017 Jan- May (b)	2018 Jan- May (a)	% Change
Inflow	US\$ Mn	600.7	580.4	3,000.1	3,100.1	3.3
	Rs. Bn	91.5	91.6	453.7	482.4	6.3

Source: Central Bank of Sri Lanka

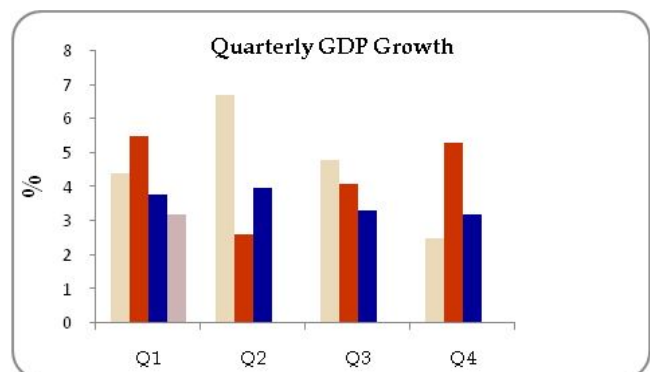
(a) Provisional

(b) Revised

PRODUCTION

QUARTERLY GDP GROWTH (%)

	1 st Q	2 nd Q	3 rd Q	4 th Q	Annual
2014	1.3	2.2	5.0	10.3	5.0
Agriculture	7.3	4.1	3.2	5.0	4.6
Industry	-1.5	-2.8	7.8	11.7	4.7
Service	1.9	4.0	3.0	11.7	4.8
2015	4.4	6.7	4.8	2.5	5.0
Agriculture	5.9	10.4	7.3	-0.5	4.7
Industry	1.4	3.9	4.9	1.9	2.2
Service	5.4	6.9	6.5	2.7	6.0
2016	5.5	2.6	4.1	5.3	4.5
Agriculture	1.9	-5.6	-1.9	-8.4	-3.8
Industry	8.3	2.2	6.8	9.2	5.8
Service	4.9	4.9	4.7	4.6	4.7
2017	3.4	3.0	3.2	3.5	3.3
Agriculture	-4.4	-3.1	-3.0	7.1	-0.8
Industry	3.7	5.6	5.3	4.1	4.6
Service	4.3	2.7	2.8	3.2	3.2
2018	3.2				
Agriculture	4.8				
Industry	0.9				
Service	4.4				



GDP grew by 3.2%

The Sri Lankan economy grew by 3.2% in first quarter 2018 compared to 3.4% growth recorded in first quarter 2017. The growth was mainly supported by the expansion of Agriculture sector by 4.8% and Services sector by 4.4%. However, Industry sector contracted by 1.0%.

Source: Department of Census & Statistic

Note: Growth rate of value added terms based on year 2010

Employment

Labour Force Participation Rate

Unemployment Rate

By Gender

Male

Female

By Age Group

0-29

30-49

50-64

Source: Department of Census & Statistics

(a) Data cover the entire island

* Provisional

Category

Production

ea (Mn. Kg)

ubber (Mn. Kg)

oconut (Mn. Nuts)

Exports (US\$ Mn)

ea

ubber

oconut

Colombo Auction Prices

ea (Rs./ Kg)

ubber (Rs./ Kg)

oconut (Rs/nut)

Source: Central Bank of Sri Lanka and Forbes & Walkers Commodity Brokers Pvt Ltd

Factory Industrial Production Index (2015=100)

Item (a)	2017 May (b)	2018 May (c)	Growth %
Manufacture of Food Products	100.2	103.1	2.9
Manufacture of Beverages	88.1	91.3	3.6
Manufacture of Tobacco Products	99.4	97.3	-2.1
Manufacture of Textiles	105.2	110.1	4.6
Manufacture of Wearing Apparel	110.3	114.1	3.5
Manufacture of Leather and Related Products	107.6	109.2	1.5
Manufacture of Wood products ,except Furniture; Articles of Straw & plaiting materials	102.7	108.0	5.1
Manufacture of Paper and Paper Products	108.9	94.9	-12.8
Printing and Reproduction of Recorded Media	109.1	97.2	-10.9
Manufacture of Coke and Refined Petroleum Products	101.5	115.2	13.5
Manufacture of Chemicals and Chemical Products	80.5	97.4	20.9
Manufacture of Pharmaceuticals, Medicinal Chemicals	97.4	108.3	11.2
Manufacture of Rubber and Plastic Products	115.0	110.4	-4.0
Manufacture of Other Non-Metallic Mineral Products	110.0	98.8	-10.2
Manufacture of Basic Metals	117.1	123.3	5.3
Manufacture of Fabricated Metal Products	97.4	116.3	19.5
Manufacture of Electrical Equipment	105.1	79.3	-24.6
Manufacture of Machinery and Equipment n.e.c	115.7	99.6	-13.9
Manufacture of Furniture	100.0	106.1	6.1
Manufacture of other Manufacturing	96.2	101.2	5.2

Source: Central Bank of Sri Lanka

(a) The Factory Industrial Production Index (FIPI) has been replaced with the Index of Industrial Production (IIP)

(b) Revised

(c) Provisional